

Speed & RPM – Bosch

Hall Effect - Automotive

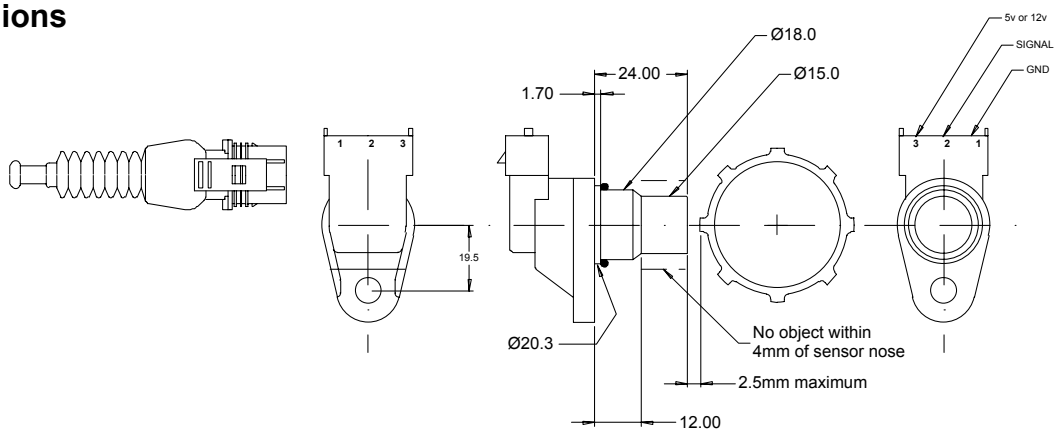


Description

Rugged automotive Hall Effect switch with an ABS moulded plastic enclosure and fully sealed electronics. Suitable for all applications from wheel speed to engine phase position.



Dimensions



Technical Data

Supply voltage 4.5 > 24 Vdc
 Nominal sensing distance..... 1.5 mm
 Max be increased in proportion to pick up size
 Current (typ) 10 mA
 Current (max) 20 mA
 Environment sealing..... IP67
 Weight..... 30 g

Temperature range -30 > + 130 °C
 Tightening torque 6 Nm
 Output..... PNP
 Output sink voltage 0.4v Max
 Trigger type..... ferrous

Electrical connections

| Pin | 1 | 2 | 3 |
|----------|-----|--------|-----|
| Function | Gnd | signal | VBB |

Ordering information

| Part No. | Description | Order Code |
|----------|--------------------|-------------|
| CS260 | Bosch speed sensor | 23813030401 |
| CS 15 | Connector kit | 23813030411 |

| | | |
|---|------------------------------------|---|
| MM Competition Systems Ltd Hyjuniper, Long Lane Shaw, Berkshire, RG14 2TA England | For further details please contact | |
| | | Tel: +44 (0)8707 444666 Fax: +44 (0)8707 444888 www.mmcompsys.com mail@mmcompsys.com |